



THERMA-KLEEN®

TECH SHEET

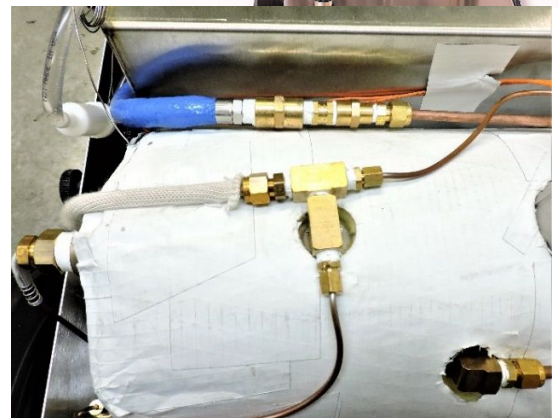
Smart Design & Safety Features Engineered into our TS10 - TS1.5 - Deluxe - 400 Models

Most people don't think about Safety Features, Health Considerations, or Eco-friendliness, when buying Steam Cleaning Equipment. Perhaps this is due to a general lack of awareness and understanding the benefits that properly designed equipment will bring.

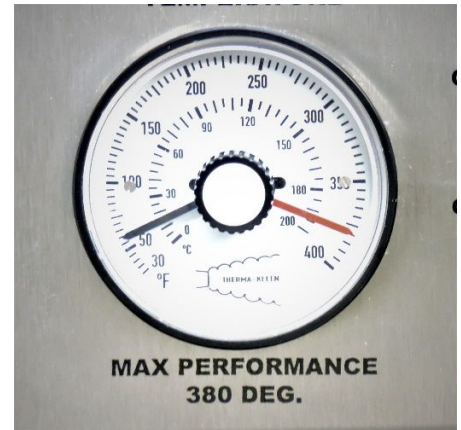
To provide our customers with the very best Dry Vapor machines possible, Therma-Kleen has engineered features into our units which make them easier and more efficient to operate, produce better results, as well as being safer and more durable.

THERMA-KLEEN DESIGN FEASTURES

- Temperatures Max:
 - Models TS10, TS1.5 & Deluxe 330° F/170° C
 - Model 400 380° F/193° C
- Pressure Max:
 - Models TS10, TS1.5 & Deluxe 100 psi/6.8 bar
 - Model 400 160 psi/11 bar
- Construction:
 - Manufactured with heavier 14 Gage Stainless-steel vs the lighter 18 Gage or plastic material used by others
 - Makes for a much more rugged and robust machine.
 - Stainless-steel Handle (Standard Feature) designed to hold all accessories within easy reach of the operator.
 - Not stored in a bag or box located somewhere else like others.
 - Pressure Fittings are all Stainless-steel or Brass, which makes for a stronger and cleaner unit.
 - No cheap plastic quick disconnect slip fittings.
 - All plumbing lines are Stainless-steel, Copper or High Pressure Insulated Tubing.
 - No plastic tubing which can rupture.



- Reads Actual Temperature:
 - It's temperature that is important, for it is what sanitizes by killing pathogens & bugs, etc., and brakes down dirt's bond. Pressure matters, but not as much as temperature.
 - Therma-Kleen units read actual temperature because you need to know what temperature you are getting. This is important for those who are concerned about effective sanitizing and cleaning.
 - Others only read pressure, which tells you what?
 - The operator can adjust the temperature to fit the application.
 - If you do not need the Maximum 330° or 380° F temperature (depending on which model you have) , it can be set to the level needed for the application.
 - Advantages:
 - Reduces operating cost
 - Even out operating characteristics



- Boiler:
 - 504 Grade Stainless-steel
 - Round construction which eliminates cold spots developing in corners.
 - Heavy duty insulation to better contain heat, which reduces operating cost.
- Heating Element:
 - Incoloy 800 Super Alloy.
 - Designed to be removed without having to remove the whole boiler assembly from the machine.

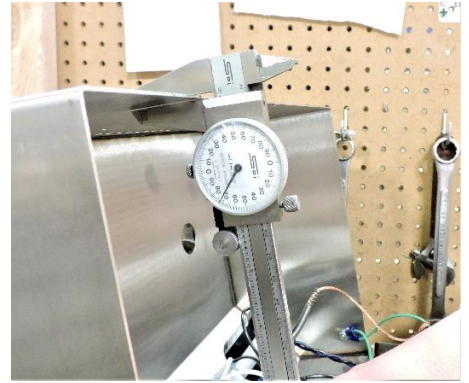


THERMA-KLEEN SAFETY FEATURES

Steam has inherent safety concerns in that there is pressure and heat involved. In this regard, Therma-Kleen has gone above and beyond what is normal in the industry. To alleviate apprehension's, we have built into our systems redundant features to prevent pressures from building to an unsafe level.

- Internally Fused:
 - Fast Blow fuses prevents damage if a short circuit should occur. Fuses are easily replaceable.
- Temperature/Pressure Safety Features:
 - Combistat – Reads the temperature and Shuts off the heater when the boiler reaches set point
 - Pressure Safety Sensor – Pre-set at factory to Shut off heater at a predetermined point.

- Pressure Relief Cap – Allows steam to escape if pressure exceeds safe target limit.
- Heavy Gage Stainless-steel body:
 - If a rupture should occur within the system, it will contain the leak much better than a plastic or lighter material enclosure.
- Low Water Alarm:
 - An Audible Alarm which notifies operator to shut off heater and fill with water, so heater does not over-heat and burn up.
- Check Valve:
 - Solenoid valve shuts to prevent back flow into pump
 - Check Valve – Stops back flow if solenoid valve should not completely shut.
- Filter:
 - Filter out contaminates in water.



NOTE: Not all features are on every machine

WHY THERMA-KLEEN DRY VAPOR CLEANERS

- Uses only clean water – No chemicals
- Reduces chemical cost
- No need to come in contact with toxic or allergen causing cleaning agents
- Sanitizes as well as cleans
- Maintain an environmentally neutral workplace
- Easy and safe to use
- Can be used on electrical parts
- Reaches into tight corners and small cracks
- Quick drying

These are all things which separate Therma-Kleen's American Engineered and Manufactured Industrial Grade machines from the lighter imported units



**Therma-Kleen®
Vertim Inc.**

2415 E. Huron P.O. Box 805
Au Gres, MI 48703

Ph: 630-718-0212 Fax: 989-876-6640

E-mail: sales@therma-kleen.com Web: www.therma-kleen.com